



SAFEGUARDING CHILDREN

BSCB NEWS

April 2013

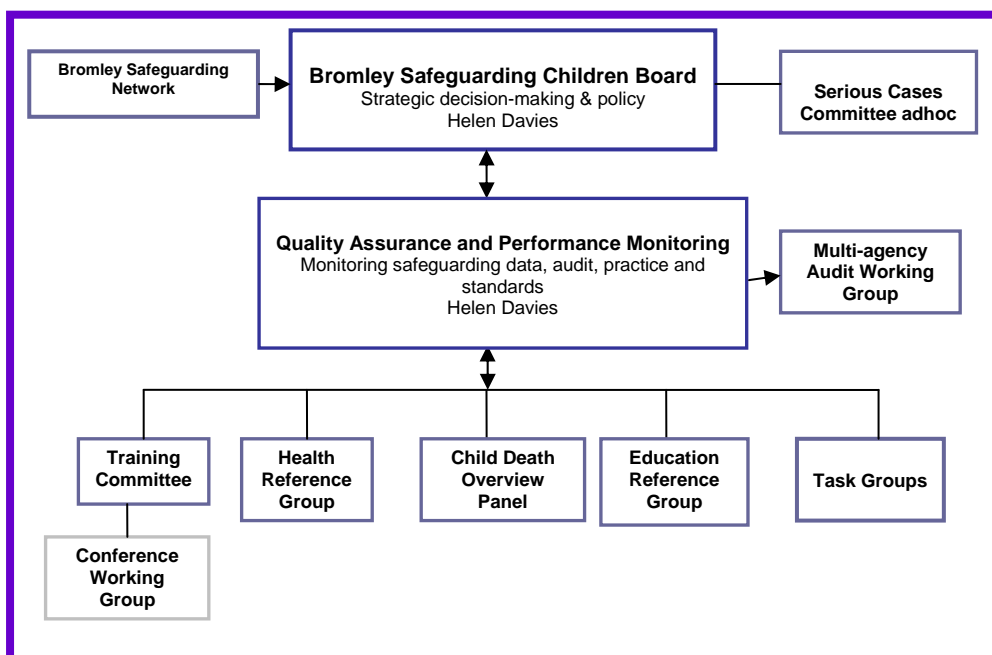
Changes to the Board

In January 2013, the Bromley Safeguarding Children Board Structure was reconfigured, this was following agreement by the Board in November 2012. The diagram below shows the new structure, but in summary:

- The Board has replaced what was the Executive and will be the key strategic decision making group, with representation at Director and Assistant Director level;
- The Quality Assurance and Performance Monitoring committee will continue to focus on monitoring safeguarding data, audit, practice and standards. Membership of the committee has been updated and it is now chaired by the Board's Independent Chair;
- The Bromley Safeguarding Network is a newly constituted group which has replaced the 'Main Board'. The Bromley Safeguarding Network will be the main route to share key messages, learning and good practice.

Content this issue...	
Changes to the Board	p1
Farewell & Welcome	p2
New Working Together to Safeguard Children	p2
Child Protection Conferences	p3
Tackling Troubled Families	p3
Annual Conference	p4
BSCB Training 2013-4	p5
Key contacts	p6

These changes have been introduced to strengthen the Board and to ensure that there is partner agency buy-in at a high level on the Board as well a number of professional advisors to the Board.



Farewell

Denise Partridge, Lead Officer for Education Safeguarding has retired. Denise worked for the Board for six years and during that time formed strong relations with schools in both the maintained and independent sector. Denise provided training for school staff at all levels including governors and helped schools to undertake safeguarding audits. She was a leading member of the Board contributing to training, the annual conference and strategies including around child sexual exploitation and E-safety. We wish Denise all the best in her retirement.

Welcome to Lorrisa Webber

We welcome Lorrisa Webber as the new Lead Officer for Education Safeguarding. Lorrisa took up her new role on Monday 15th April and joins us with a great deal of experience from a similar role in another local authority. Lorrisa is looking forward to working with schools and partner agencies in Bromley to help safeguard and promote the wellbeing of children.

New Working Together to Safeguard Children 2013 published

The much awaited Working Together to Safeguard Children has now been published and comes into force on 15th April 2013. The statutory guidance replaces:

- Working together to safeguard children (2010)
- Framework for the assessment of children in need and their families (2000), and
- Statutory guidance on making arrangements to safeguard and promote the welfare of children under section 11 of the Children Act 2004 (2007).



Most of the responsibilities and procedures in the new 2013 Working together remain the same as the 2010 guidance, but the length of the document has been reduced from more than 700 pages in the 2010 version to 95 pages including a glossary. The guidance is clear that “safeguarding is everyone’s responsibility”. Other headlines include:

- The reinstatement of statutory timescales for assessing the needs of vulnerable children, which had been removed from the consultation documents;
- A removal of the distinction between initial and core assessments, replaced by ongoing’ locally developed, assessments of need;
- A change in the governance arrangements for independent Chairs of local safeguarding children boards (LSCBs), who will now be appointed and held to account by the local authority Chief Executive rather than the Director of Children’s Services;
- The establishment of a national panel to hold LSCB Chairs to account on whether serious case reviews should be carried out, which independent reviewers should be commissioned to lead the review, and to challenge any decision that the report should not be published;
- A strong reiteration of the government’s intention that all serious case reviews should be published in full, and more detailed guidance on what this means in practice;
- A reversal of the consultation’s proposal for all future serious case reviews to be undertaken using so called “systems methodology”, with LSCBs instead free to use any model that is broadly in line with stated principles; and

- A requirement on LSCBs to develop a local framework for learning and improvement, including regular reviews of cases that may not meet the criteria for a full serious case review, as part of an ongoing process of learning and development.

Child Protection Conferences

From 1st April 2013 all child protection conferences will be chaired using the Strengthening Families Framework. If you did not have the opportunity to attend one of the training or briefing sessions last year you may be interested in applying to attend the forthcoming two day training on 25 and 26 June 2013 and 12 and 13 February 2014. For further details see the BSCB training brochure. www.bromleysafeguarding.org



An important reminder – if you wish to bring somebody with you to observe a child protection conference, perhaps as part of their induction or training, please could you ensure that you notify the allocated social worker and also the Chair of the conference at least a week beforehand. This gives time to consider whether it is appropriate to have an observer present, ensure that not more than one observer attends a conference and most

importantly, gives the opportunity to discuss this request with the parents and seek their permission. **Without prior notification, an observer will not be permitted to attend the child protection conference.**

From 1st February 2013 a new procedure was introduced to encourage the participation of young people in child protection conferences. After obtaining parental permission, a young person aged 12 years and over, will be invited to participate in their child protection conference. They will be offered the choice of either attending the conference in person, with the support of an advocate if they wish, or having their views conveyed to the conference through the advocate. A group of young people who have been or still are the subject of a Child Protection Plan, were consulted and their views incorporated into the new Procedure.

Finally, a reminder that conferences can be very stressful meetings for families. In order to secure the best engagement of family members, we aim to make these meetings as user friendly as possible. Inevitably, if there are a number of professionals involved with the family the conference may be a big meeting. In order to make the meeting less daunting for families, it would assist if only one representative from each school attends the conference unless there is a very good reason why one person will not be able to share all the relevant information.

Tackling Troubled Families



The Tackling Troubled Families programme (TTF) is designed to help those families characterised by there being an adult in the household not in employment and in receipt of benefits, children attending school less than 85% and family members being involved in crime and anti-social behaviour. It is estimated that Bromley have around 490 families facing multiple problems. The primary aim is to get children back into school, reduce youth crime and anti-social behaviour, put adults on a path back to work and reduce the high costs placed on public services.

To take this initiative forward, Bromley have recruited four additional Family Support Parenting Practitioners to work alongside existing Bromley Children Project (BCP) staff. They will look at the family from the inside out, understand the dynamics, and offer practical help and support in striving to achieve those positive outcomes.

Identifying Families

The criteria for targeting families for the TTF programme will therefore reflect those issues (*at least one child must be aged 11- 19 years*). For the purposes of qualifying to be part of the TTF programme, the household must meet either 3 national criteria or 2 national & 1 local criteria.

National Criteria

- Are involved in crime and anti-social behaviour
- Have children not in school (less than 85%)
- Have an adult on out of work benefits
- Cause high costs to the public purse

Local Criteria

- Edge of care (child subject to a CP Plan/ risk of becoming LAC)
- Family at risk of eviction
- Domestic Violence Issues
- Substance Misuse Issues
- Mental Health Issues

Referrals can be made via the BCP referral form which can be downloaded from www.bromley.gov.uk (*TTF involvement with a family is consent based*).

Email any questions to the TTF Co-ordinator neil.dilkes@bromley.gov.uk

Further information can be found on the DCLG website www.gov.uk/government/policies/helping-troubled-families-turn-their-lives-around

Forthcoming Events & Training!

Annual Conference – Child Sexual Exploitation

We are pleased to announce that the 2013 Bromley Safeguarding Children Board Annual Conference will focus on child sexual exploitation, raising awareness of the issue and looking at how we can help protect children in Bromley from child sexual exploitation.

There will be speakers from a range of national and local services and part of the day will include a theatre production.

Booking for the conference will begin in the summer, but for now, be sure to put the date in your diary, **Wednesday 23rd October 2013**.

BSCB Training 2013-2014

The BSCB training brochure is now available to download from the BSCB website. www.bromleysafeguarding.org This includes all the training courses for 2013-14. It also includes details of how to access our free e-learning courses.



Here are some details of upcoming training:

Upcoming Courses

- | | |
|---|--------------|
| • Group 4/5 Safeguarding Children & Young People (Advanced) | 7-8 May 2013 |
| • Chairing Team Around the Child Meetings (TAC) | 9 May 2013 |
| • Child Sexual Exploitation | 14 May 2013 |
| • Domestic Abuse and Safeguarding Children | 22 May 2013 |
| • Safeguarding Disabled Children: Raising Awareness | 7 June 2013 |

More detail on each course is available to download from the BSCB website: www.bromleysafeguarding.org. Email your form to: Course.booking@bromley.gov.uk



Key Contacts

COMMUNITY & VOLUNTARY

Children and Families
Voluntary Sector Forum

Judy Kimmins
cfforum@btinternet.com

020 8315 1909

EDUCATION

Education Safeguarding

Lorrisa Webber
lorrisa.webber@bromley.gov.uk

020 8461 7669

HEALTH

Designated Doctor for
Safeguarding

Dr Nike Adeoye
Onikepo.Adeoye@bromleypct.nhs.uk

Designated Nurse for
Safeguarding

Sarah Turner
Sarah.Turner@bromleypct.nhs.uk

0208 313 4819

Designated Doctor
Unexpected Deaths

Dr Sujata Sharma
Sujata.sharma@bromleypct.nhs.uk

Child Death Administrator

Gulshen.Fisher@bromley.gcsx.gov.uk

Fax: 020 8313
4288

Designated GP for
Safeguarding

Dr Kate Dyer
Kate.Dyer@nhs.net

Named Nurse
(South London Hospital
Trust)

Lynn Torpey
lynn.torpey1@nhs.net

Named Nurse Safeguarding
(Oxleas Mental Health NHS)

Carolyn Pilkington
Carolyn.Pilkington@oxleas.nhs.uk

01322 625 029

POLICE

Bromley Police Public
Protection Desk

DI Dave Smith

020 8284 8766

SOCIAL CARE

Head of Service, Quality
Assurance & Safeguarding

Julie Daly
julie.daly@bromley.gov.uk

020 8313 4610